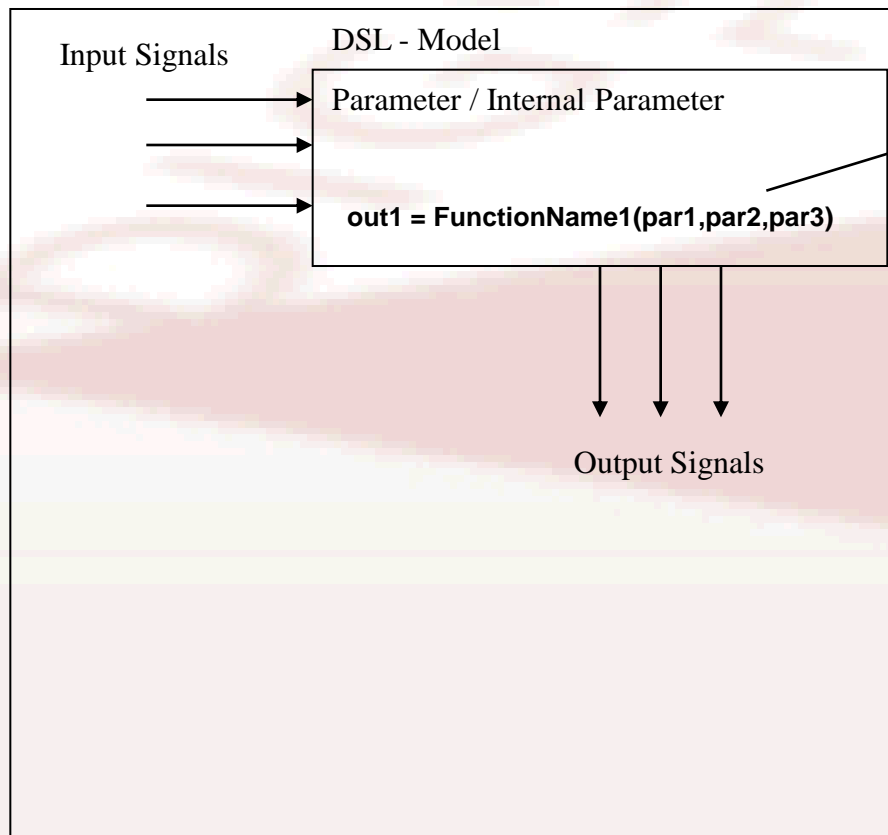


Link to an external DSL C/C++ function

digexfun - Interface

PowerFactory



digexfun_*.dll

```
void __stdcall FunctionName1(void)
void __stdcall FunctionName2(void)
void __stdcall FunctionName3(void)
void __stdcall FunctionName4(void)
```

C / C++ Interface

Function must be registered in userfun.cpp:

```
int __stdcall RegisterFunctions(int ifun, char* cnam, int* iVersion)
{
    if (ifun == 0) {
        strcpy(cnam, "myselect");
        *iargc = 3;
    } else if (ifun == 1) {
        strcpy(cnam, "FunctionName1");
        *iargc = 3;
    }
}
```

// function index
// new function name
// number of arguments

Function Prototype:

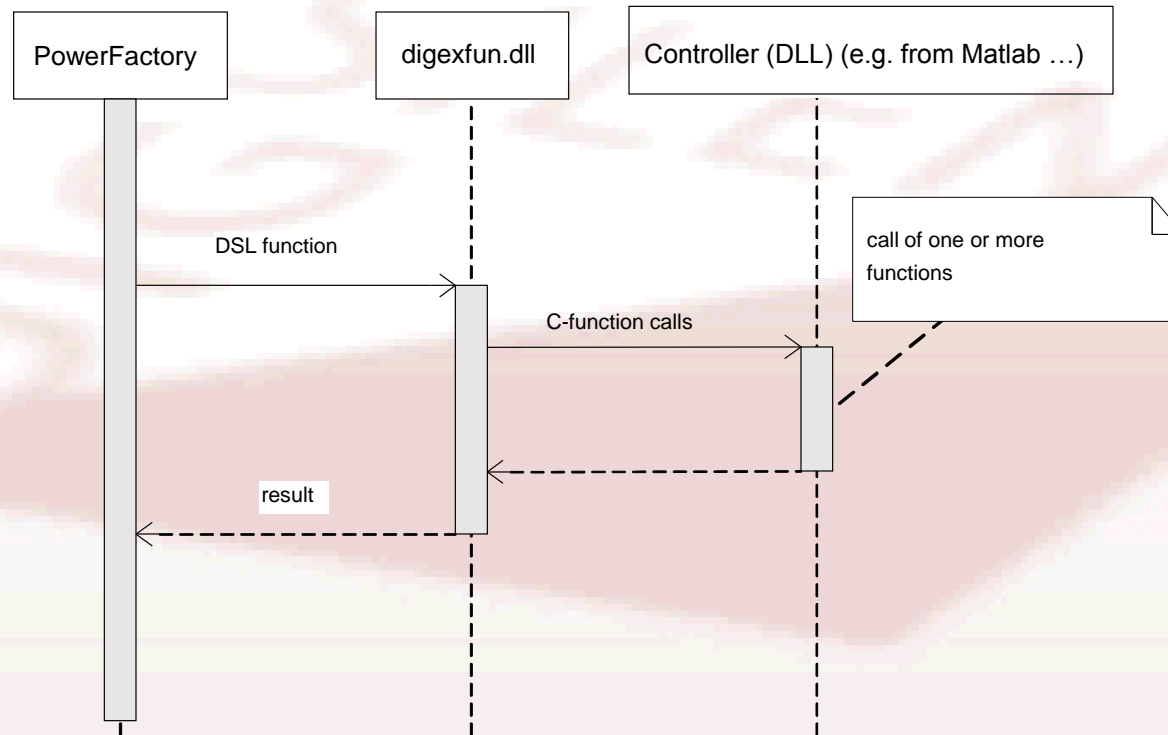
```
void __stdcall FunctionName1(void)
```

Returning a value:

call push(value1) at the end of the function

Access to the function arguments => use pop()

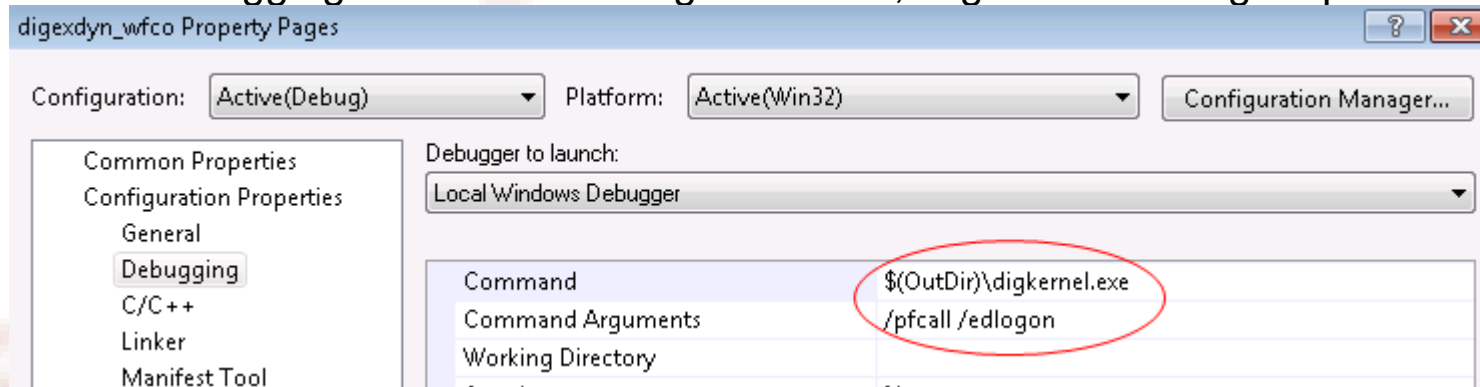
C-Interface -> Controller DLL



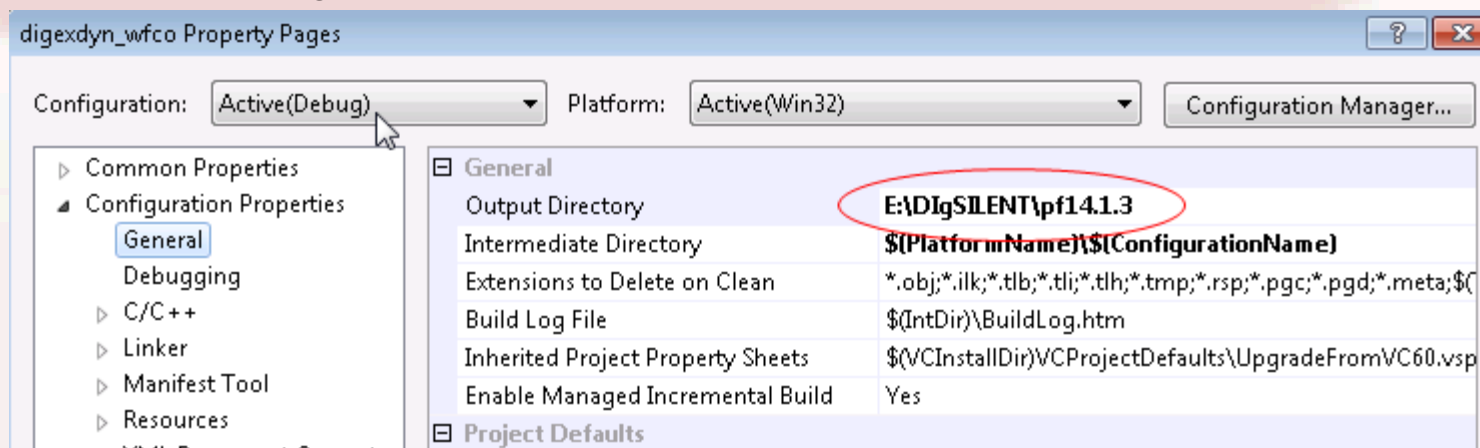
Visual Studio Settings

■ Microsoft Visual Studio 6.0, 2005, 2008 or Express Edition

◆ For debugging => Command: digkernel.exe, Arguments /edlogon /pfcall:



◆ Linker Settings



digexfun external functions

- `RegisterFunctions(int ifun, char* cnam, int* iVersion) :`
To register the external c function (called from PowerFactory)
- `get_wrk_path() :`
To get the PowerFactory installation directory e.g. „e:\DlgSILENT\PF14.1“
- `emitMessage(const char *msg) :`
To print a message into the PowerFactory Output Window